

Introduction to Geogebra

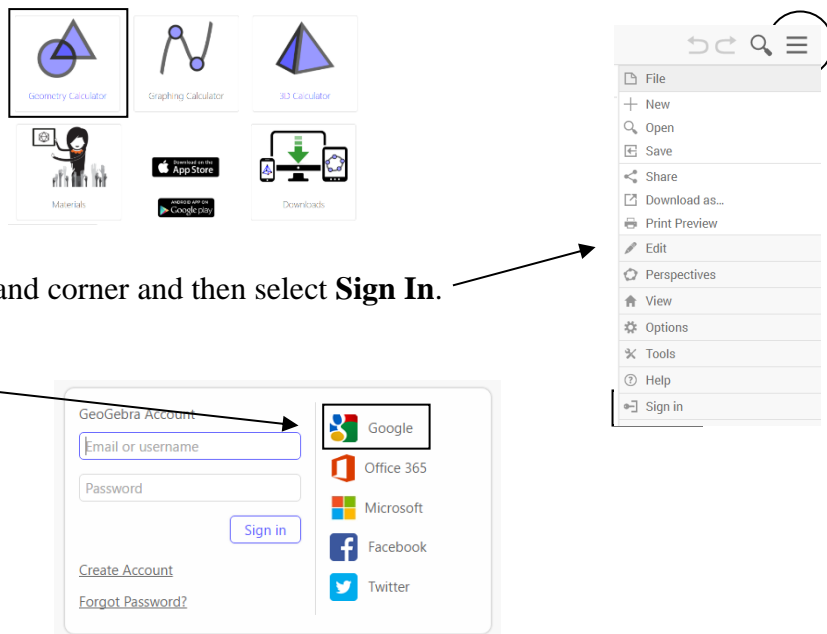
Date _____ Period _____


CREATE YOUR NAME ACTIVITY

To receive full credit on this assignment, students will be expected to actively work throughout the class period(s) and correctly follow all stated directions. A finished copy will also need to be showed to me. This assignment is worth up to **10 points**.

To Open Geogebra:

- 1) Go to **www.geogebra.org**.
- 2) Select **Geometry Calculator** from the grid.
- 3) Select the “**Three Bar**” icon in the top right hand corner and then select **Sign In**.
- 4) Sign in using the **Google** icon.
- 5) Begin the *Create Your Name Activity*.

**Starting Hints for Using Geogebra:**

- Activate a toolbox by clicking on any icon across the top of the screen. To help direct you to the proper toolbox, in my directions each toolbox menu corresponds to a number (1 - 12) going from left to right.
- Click on a toolbox and select any tool from the dropdown menu.
- The tool that is highlighted with a blue box is the tool currently activated. The directions for the activated tool will appear in a window and explain what objects must be selected to use the tool properly.
- The last tool you used remains active until you click on a different tool. **Always return back to the “Move” Tool when you want to select an object.**
- To correct mistake(s), look in the upper right hand corner and select the *Undo* button  . You can hit it multiple times.

“Create Your Name” Directions:

- 1) Open up a new sketch. If the x & y axes are present, turn them off by “right-clicking” with your mouse and uncheck AXES.
- 2) Sketch your name using the segment tool. If you are feeling ambitious, use arcs.
(2 pts)
- 3) Change the STYLE and/or COLOR of a segment by “right-clicking” to select it and then choosing OBJECT PROPERTIES from the drop down list. Use the COLOR and/or STYLE tabs to change the look of any object. (2 pts)
- 4) Find the length of two segments. (2 pts)
- 5) Find the measure of two angles in your name. When measuring an angle you must select the points in CLOCKWISE order with the vertex in the middle. For my measured angle, I selected point E, then D, and then C. (2 pts)
**Use the MOVE tool to select a point and move it.
- 6) Open up a textbox. Clicking anywhere on the screen will allow you to add words and measurements to your sketch. Record your measured segment and angle measure using proper notation in the textbox. (2 pts)
** I was fancy!...I used the angle symbol \sphericalangle , which can be found under the ADVANCED option and then under the “ $\alpha\beta\gamma$ ” dropdown menu. You could also just use words like I did in my second textbox. If the letters of your name don’t form an angle, just make one at the end like I did.
- 7) TO SAVE...Click on the three bars in the upper right hand corner. Then select SAVE. Title your project using the following format (First Name Last Name – Create Your Name Activity). Then click the icon in the bottom left hand corner of the pop-up box. Select the GOOGLE DRIVE option. Then choose SAVE. You will now be able to work on your project at home or again in class.

